



Lakes Zoning
Bylaw No. 900
Schedule B

Shuswap Lake Area : SeymourArm

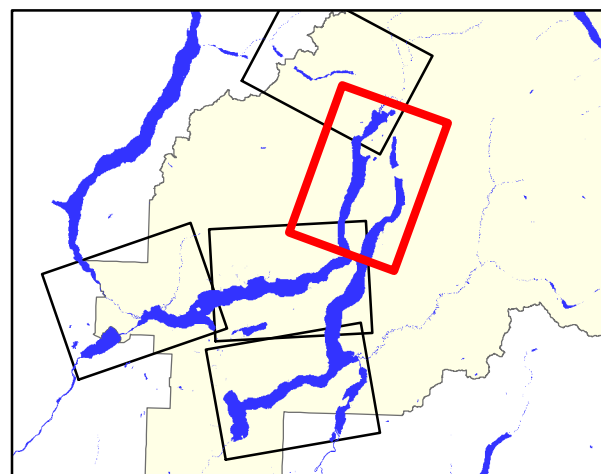
- Outside CSR D
- CSR D Boundary
- Parcel
- First Nations
- Water Outside Bylaw Area
- Parks

Foreshore Zoning

- FC1 - Foreshore Commercial 1
- FC2 - Foreshore Commercial 2
- FC3 - Foreshore Commercial 3
- FC4 - Foreshore Commercial 4
- FM1 - Foreshore Multifamily 1
- FM2 - Foreshore Multifamily 2
- FM3 - Foreshore Multifamily 3
- FI - Foreshore Industrial
- FG1 - Foreshore General 1
- FG2 - Foreshore General 2
- FP - Foreshore Parks
- FR1 - Foreshore Residential 1
- FR2 - Foreshore Residential 2
- FW - Foreshore Water



Consolidated for Convenience Only



Map Strip: 4 SeymourArm

0 0.5 1 2
Km

Scale 1:36,000
(at original size of 24x36 inches)

Nad 83 CNT Datum
UTM Zone 11 N

Columbia Shuswap Regional District
555 Harbourfront Drive NE
Salmon Arm, BC V1E 4P1
Name: Mapbook_Foreshore_Zoning
Date: 2/10/2022

The information on this map was compiled by the CSR D for regulatory and internal reference purposes only. No representation or warranty is made as to the accuracy of the information.