

# COMMUNITY PROFILE

## CSR D AREA E

APRIL 2014

### AREA E OVERVIEW:

Area E is located largely between Sicamous and Revelstoke. It comprises the communities of Malakwa, Solsqua and Swansea Point, as well as the areas of Cambie, Craigellachie, Hyde Mountain, Solsqua and Three Valley Gap. This Area borders both Shuswap Lake and Mara Lakes.

The Trans-Canada Highway runs directly through Area E, as does the Okanagan Highway, providing transportation links to points throughout Western Canada.

This area allows the opportunity for a rural lifestyle with high scenic values, but with quick commutes to Sicamous, Revelstoke and Salmon Arm for easy access to most urban amenities.

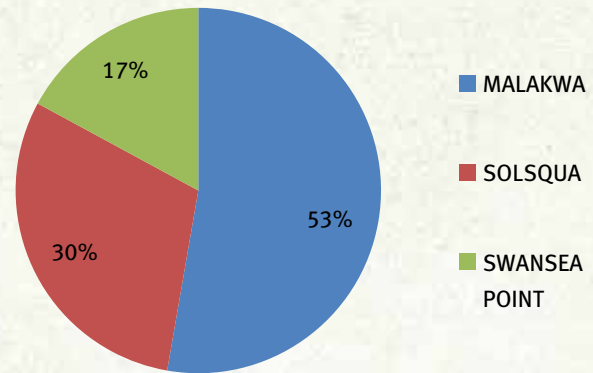
Proximity to lake- and mountain- as well as summer- and winter-based activities attracts a high number of visitors to Area E.



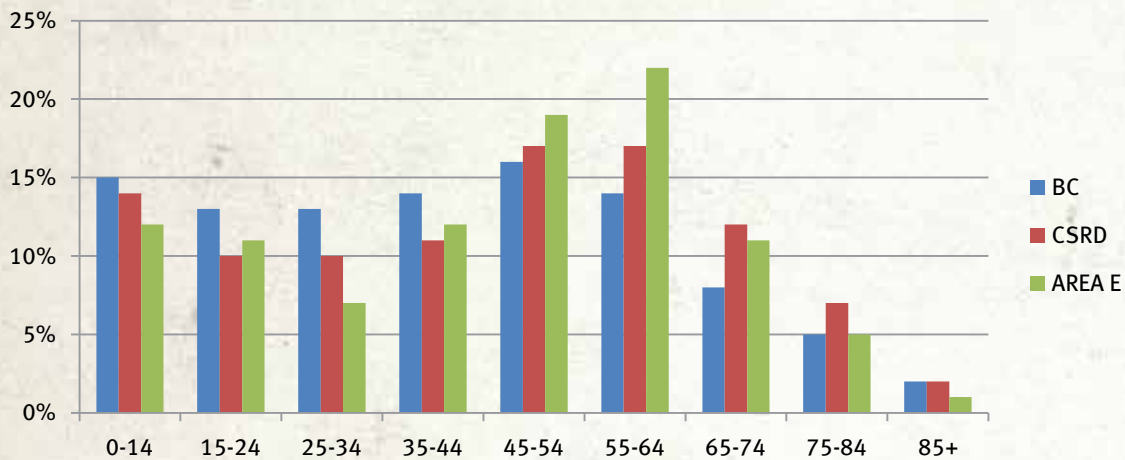
## POPULATION:

	BC	CSRD	Area E
Population in 2011	4,400,057	50,512	1,335
Population in 2006	4,113,487	50,141	1,528
2006-2011			
Population Change (%)	7.0%	0.07%	-12.6%

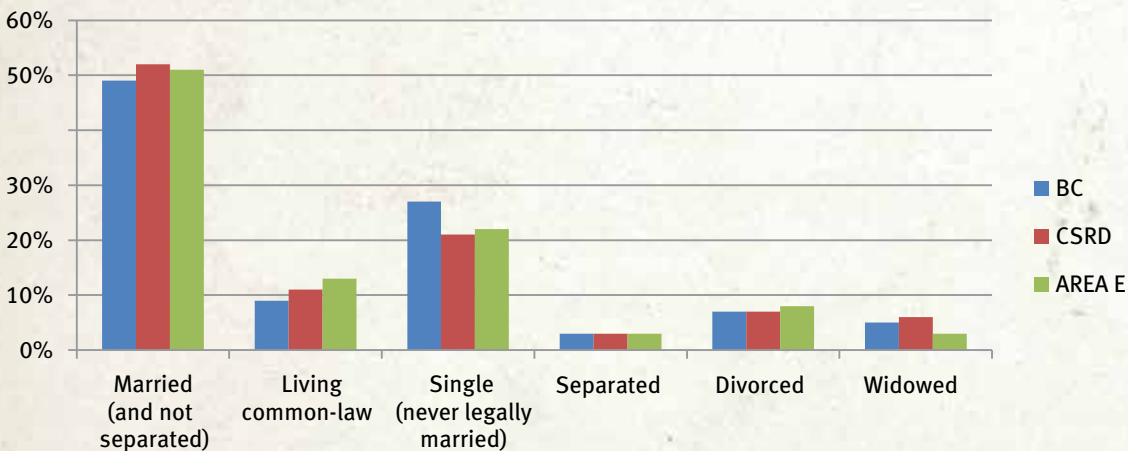
## POPULATION DISTRIBUTION WITHIN AREA E:



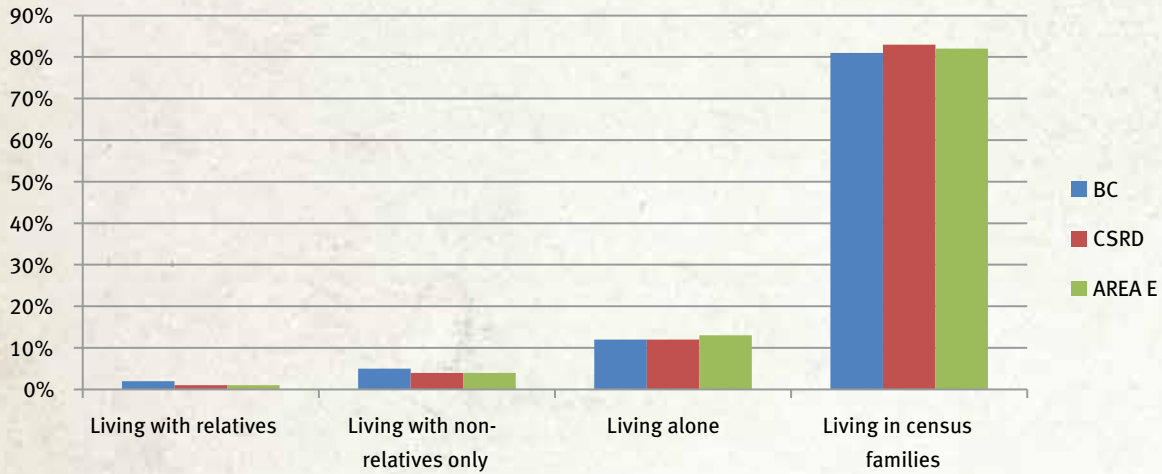
## TOTAL POPULATION BY AGE GROUPS (% DISTRIBUTION):



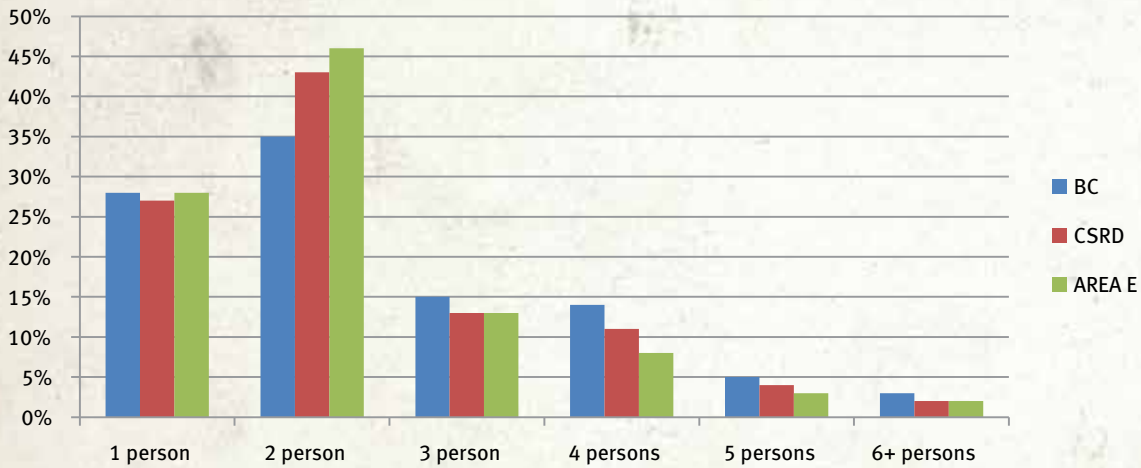
## TOTAL POPULATION BY MARITAL STATUS (% DISTRIBUTION):



### TOTAL POPULATION BY LIVING SITUATION (% DISTRIBUTION):



### HOUSEHOLD SIZE (% DISTRIBUTION):



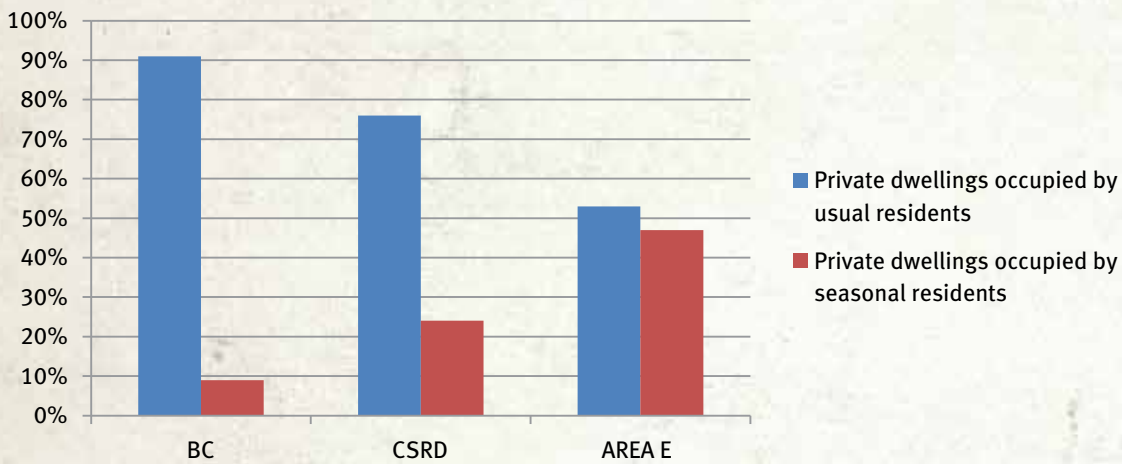
## REAL ESTATE:

Real Estate Listings/Multiple Listings Service (residential and commercial): [www.MLS.ca](http://www.MLS.ca)

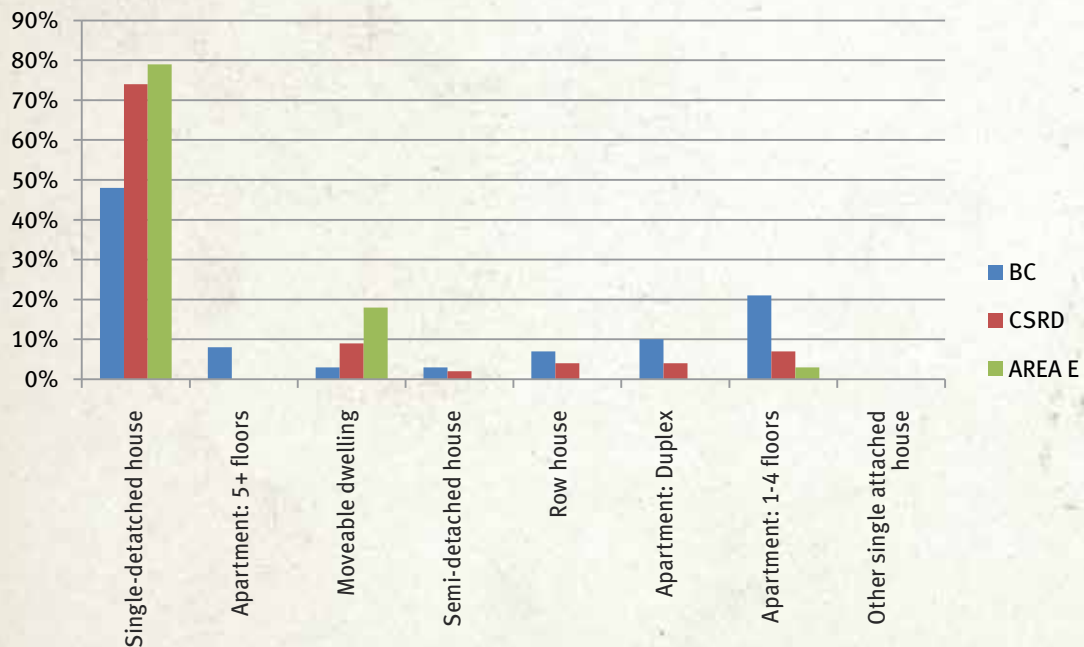
Okanagan Mainline Real Estate Board: [www.OMREB.com](http://www.OMREB.com)

BC Assessment: [www.BCAssessment.ca](http://www.BCAssessment.ca)

### YEAR-ROUND vs. SEASONAL DWELLINGS (% DISTRIBUTION):



### TYPES OF DWELLINGS (% DISTRIBUTION):



## POLITICAL REPRESENTATIVES:

CSRD Area E Director:

Rhona Martin: [RMartin@CSRD.bc.ca](mailto:RMartin@CSRD.bc.ca)

Local Member of Legislative Assembly  
(provincial representative):

Greg Kylo: [www.GregKylo.com](http://www.GregKylo.com)

Local Member of Parliament (federal representative):

Colin Mayes: [www.ColinMayes.ca](http://www.ColinMayes.ca)

## INDUSTRY:

Tourism, agricultural and industrial activities are all present in various forms throughout Area E. Industrial activity is largely concentrated to the forestry/logging sector. Agriculture is present on a variety of levels and extensive range of outputs. Tourism is based largely on proximity to lake, mountains, and other outdoor recreation activities.

In addition to a busy summer tourism season, Area E (combined with Sicamous) has the strongest and most developed winter tourism industry within the Shuswap Economic Development region. This industry is largely based around sledding (snowmobiling).

### TOP 5 INDUSTRIES IN AREA E

1. Retail
2. Accommodations
3. Trades
4. Food Services
5. Construction

## RAILWAY INFO:

Canadian Pacific Railway: [www.CPR.ca](http://www.CPR.ca)

Canadian National Railway: [www.CN.ca](http://www.CN.ca)

## DISTANCE TO OTHER MAJOR CENTRES:

### FROM MALAKWA

Salmon Arm:	50.4 km	<a href="http://www.SalmonArm.ca">www.SalmonArm.ca</a>
Revelstoke:	54.7 km	<a href="http://www.CityofRevelstoke.com">www.CityofRevelstoke.com</a>
Vernon:	94.1 km	<a href="http://www.Vernon.ca">www.Vernon.ca</a>
Kelowna:	148 km	<a href="http://www.Kelowna.ca">www.Kelowna.ca</a>
Kamloops:	159 km	<a href="http://www.City.Kamloops.bc.ca">www.City.Kamloops.bc.ca</a>
Calgary:	462 km	<a href="http://www.Calgary.ca">www.Calgary.ca</a>
Vancouver:	510 km	<a href="http://www.Vancouver.ca">www.Vancouver.ca</a>
Sicamous:	19.9 km	<a href="http://www.Sicamous.ca">www.Sicamous.ca</a>

## NEARBY AIRPORTS:

### FROM MALAKWA

Kamloops Regional Airport (YKA):	170 km	<a href="http://www.KamloopsAirport.com">www.KamloopsAirport.com</a>
Kelowna International Airport (YLW)	136 km	<a href="http://www.KelownaAirport.com">www.KelownaAirport.com</a>

## CLOSEST DEEP WATER PORTS:

### Port Metro Vancouver

City:	Vancouver
Distance:	512 km
Type:	Ocean
Website:	<a href="http://www.PortMetroVancouver.com">www.PortMetroVancouver.com</a>

### Prince Rupert Port Authority

City:	Prince Rupert
Distance:	1,397 km
Type:	Ocean
Website:	<a href="http://www.RupertPort.com">www.RupertPort.com</a>

## REGIONAL HEALTH AUTHORITY:

Interior Health Authority: [www.InteriorHealth.ca](http://www.InteriorHealth.ca)

---

## EDUCATION:

North Okanagan-Shuswap School District No. 83:  
[www.SD83.bc.ca](http://www.SD83.bc.ca)

Okanagan College: [www.Okanagan.bc.ca](http://www.Okanagan.bc.ca)

---

## AREA E AMMENITIES:

The geography of Area E offers an extensive range of outdoor recreation options based around lake and mountain activities. Numerous parks are located in the area and several private businesses have also been established around providing a range of outdoor adventure and recreation activities. Proximity to Revelstoke, Sicamous and Salmon Arm means quick access to an even larger number of amenities.

### AREA E ACTIVITIES HIGHLIGHTS

**Number of parks and trail areas: 25**

**Shuswap Tourism: [www.ShuswapTourism.ca](http://www.ShuswapTourism.ca)**

**Shuswap Trail Alliance: [www.ShuswapTrails.com](http://www.ShuswapTrails.com)**

**Shuswap Wineries: [www.ShuswapWineries.ca](http://www.ShuswapWineries.ca)**

**Shuswap Groove: [www.ShuswapGroove.com](http://www.ShuswapGroove.com)**

---

## COMMUNITY LINKS:

Malakwa Community Centre Association:  
[www.Malakwa.ca](http://www.Malakwa.ca)

Malakwa Community Learning Centre:  
[www.Malakwa.ca/Community.php?p=3](http://www.Malakwa.ca/Community.php?p=3)

## REGIONAL RESOURCES:

Columbia Shuswap Regional District: [www.CSRD.bc.ca](http://www.CSRD.bc.ca)

Shuswap Economic Development: [www.ShuswapEcDev.ca](http://www.ShuswapEcDev.ca)

Shuswap Tourism: [www.ShuswapTourism.ca](http://www.ShuswapTourism.ca)

Shuswap Trail Alliance: [www.ShuswapTrailAlliance.com](http://www.ShuswapTrailAlliance.com)

Okanagan Regional Library: [www.ORL.bc.ca](http://www.ORL.bc.ca)

Shuswap Community Foundation: [www.ShuswapFoundation.ca](http://www.ShuswapFoundation.ca)

Community Futures-Shuswap: [www.FutureShuswap.com](http://www.FutureShuswap.com)

Shuswap Groove: [www.ShuswapGroove.com](http://www.ShuswapGroove.com)

---

## LOCAL FIRST NATIONS:

**Shuswap Nation Tribal Council**  
[www.ShuswapNation.org](http://www.ShuswapNation.org)

**Adams Lake Indian Band**  
Chief Robin Billy  
Reserve land in SED Region: Salmon Arm & CSRD Area F  
[www.AdamsLakeBand.org](http://www.AdamsLakeBand.org)

**Little Shuswap Lake Indian Band**  
Chief Oliver Arnouse  
Reserve land in SED Region: CSRD Area C & CSRD Area F  
[www.LSLIB.com](http://www.LSLIB.com)

**Neskonlith Indian Band**  
Chief Judy Wilson  
Reserve land in SED Region: Salmon Arm  
[www.Neskonlith.org](http://www.Neskonlith.org)

**Splatsin First Nation**  
Chief Wayne Christian  
Reserve land in SED Region: CSRD Area D & CSRD Area E  
[www.Splatsin.ca](http://www.Splatsin.ca)