

COMMUNITY PROFILE DISTRICT OF SICAMOUS

APRIL 2014

DISTRICT OF SICAMOUS OVERVIEW:

Sicamous is a town located at the northern end of the Okanagan Valley on the Trans-Canada Highway, approximately halfway between Calgary and Vancouver. The community is ideally situated between both Shuswap and Mara Lakes. Sicamous supports a variety of commercial/retail- and service-based businesses including a grocery store, several restaurants, and a variety of personal services. Sicamous and the surrounding area support a very active summer tourism industry as well as a growing winter tourism industry. Several industrial-based companies are located in and around Sicamous, and the community has designated an area as an industrial park that is currently being developed.



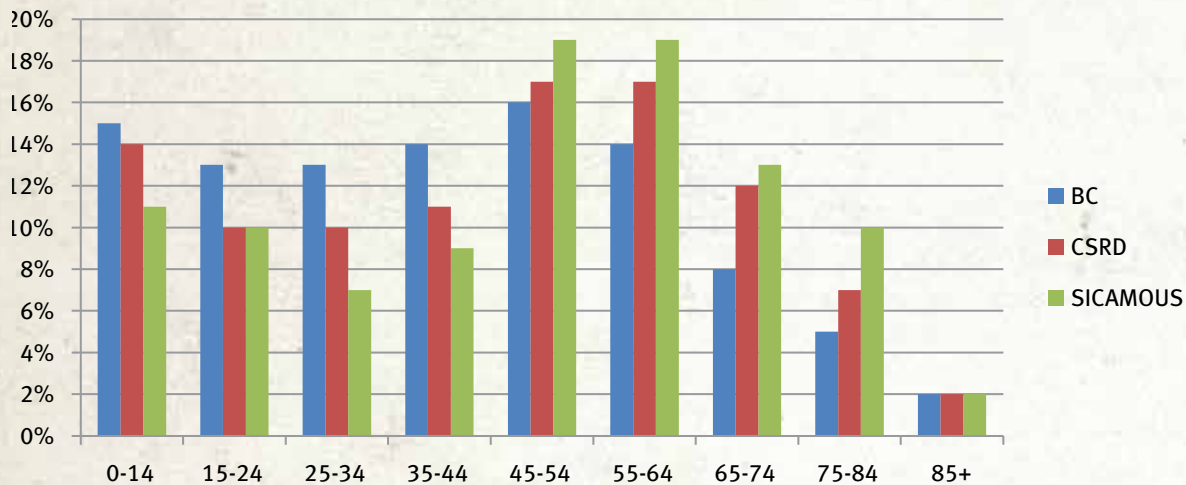
POPULATION:

	BC	CSRD	Sicamous
Population in 2011	4,400,057	50,512	2,441
Population in 2006	4,113,487	50,141	2,676
2006-2011			
Population Change (%)	7.0%	0.07%	-8.8%

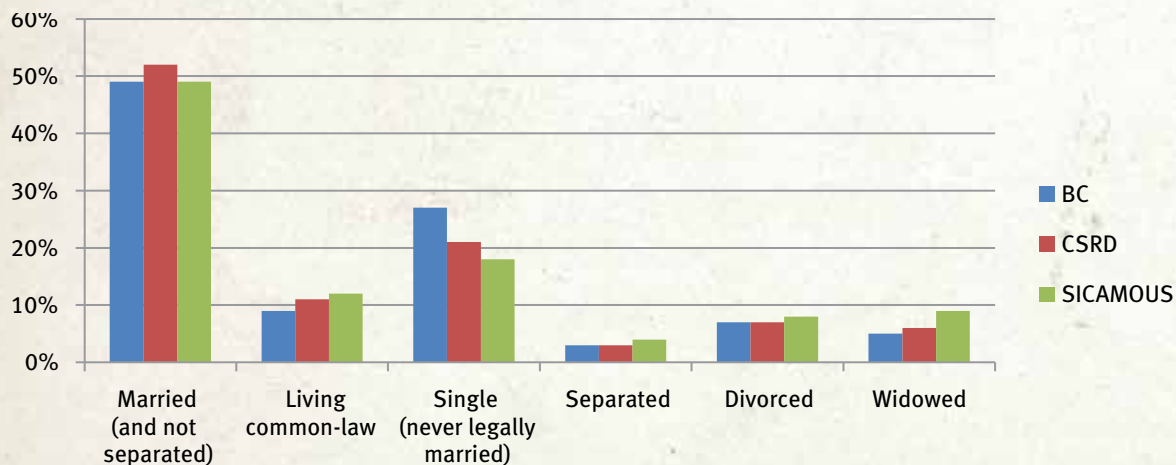
MEDIAN FAMILY INCOME:

	BC	Sicamous
2005	\$65,787.00	\$54,859.00

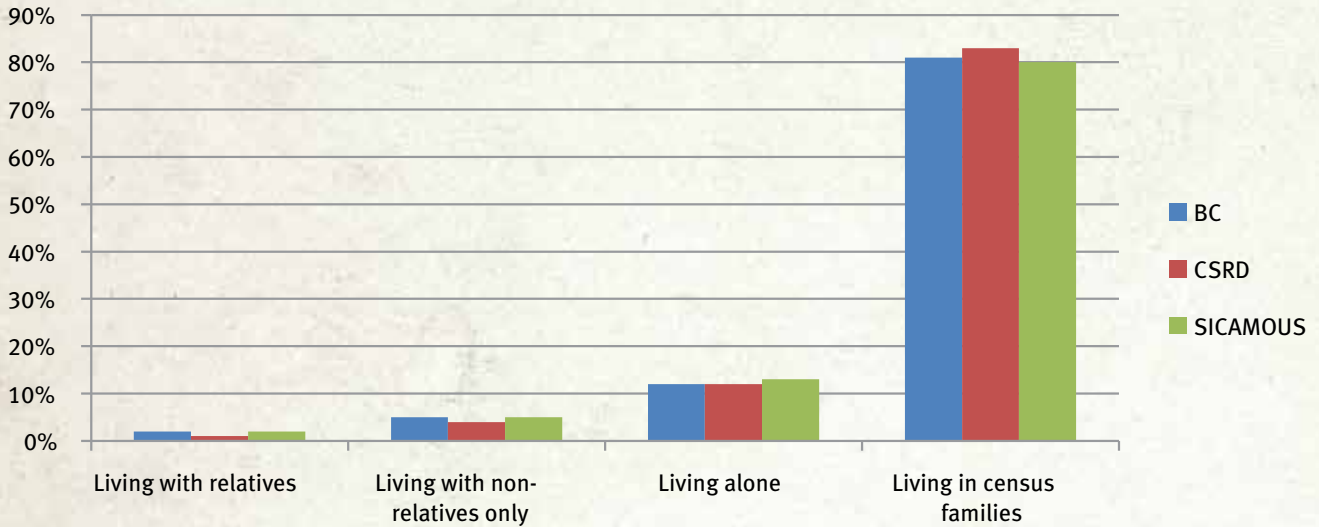
TOTAL POPULATION BY AGE GROUPS (% DISTRIBUTION):



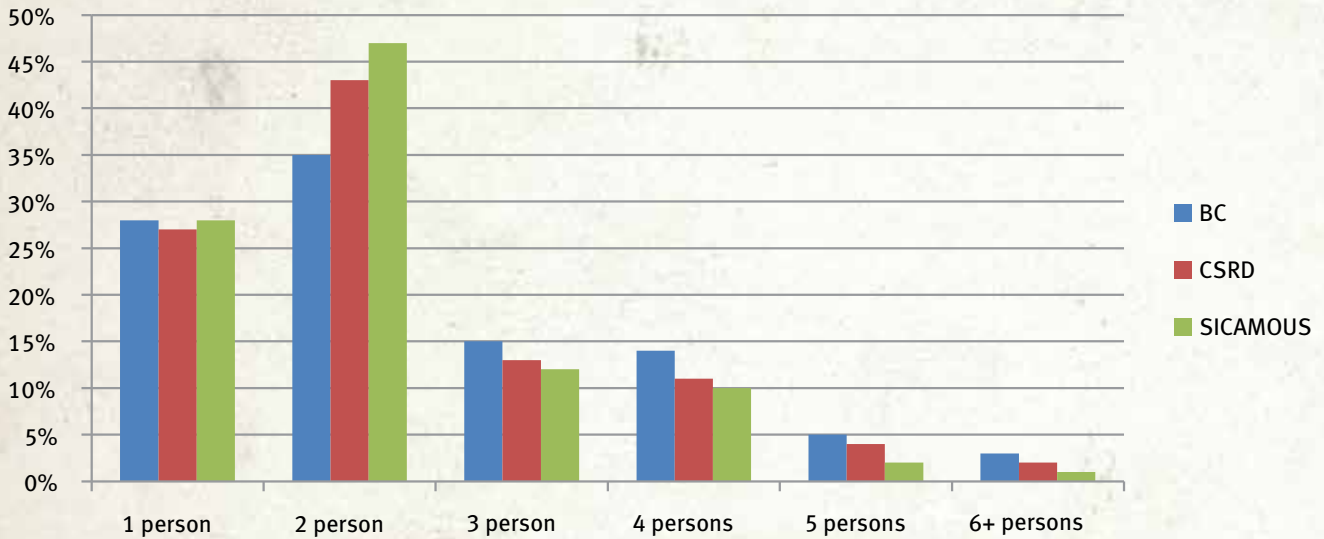
TOTAL POPULATION BY MARITAL STATUS (% DISTRIBUTION):



TOTAL POPULATION BY LIVING SITUATION (% DISTRIBUTION):



HOUSEHOLD SIZE (% DISTRIBUTION):



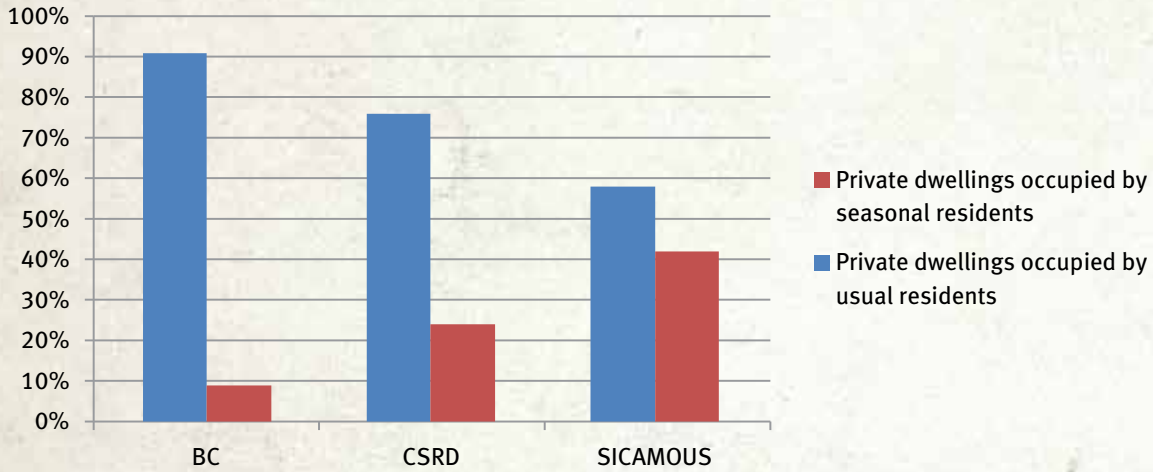
REAL ESTATE:

Real Estate Listings/Multiple Listings Service (residential and commercial): www.MLS.ca

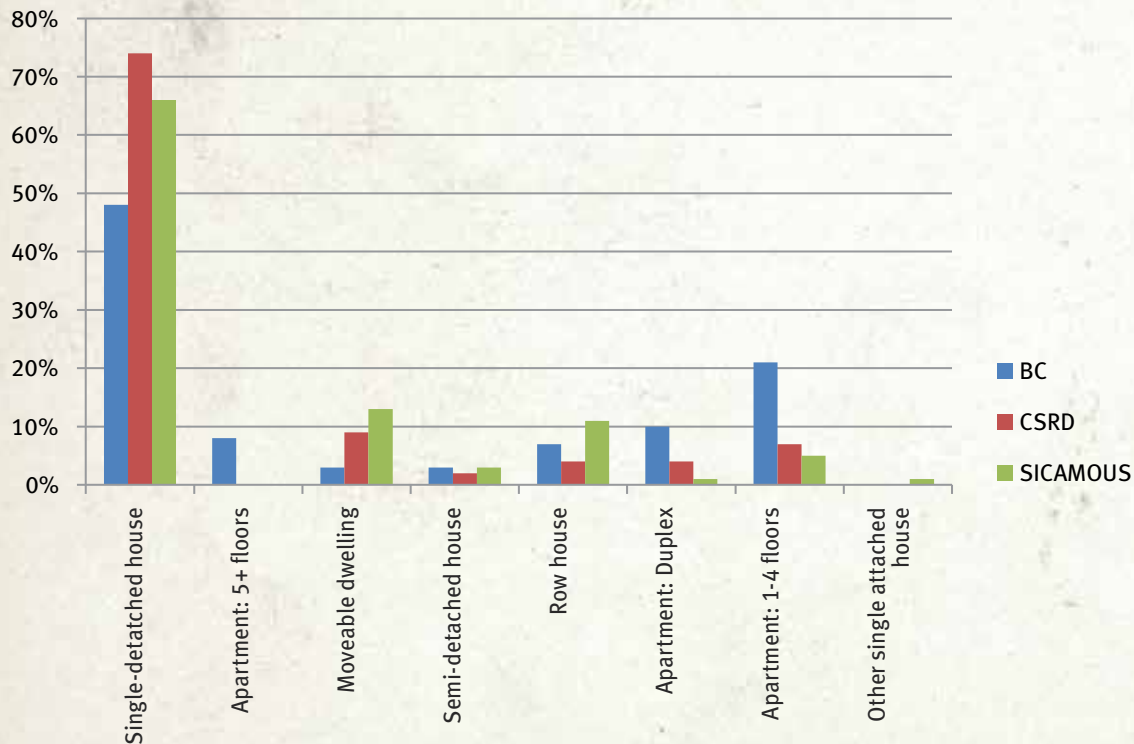
Okanagan Mainline Real Estate Board: www.OMREB.com

BC Assessment: www.BCAssessment.ca

YEAR-ROUND vs. SEASONAL DWELLINGS (% DISTRIBUTION):



TYPES OF DWELLINGS (% DISTRIBUTION):



POLITICAL REPRESENTATIVES:

Sicamous Mayor:

Terry Rysz: TRysz@Sicamous.ca

Local Member of Legislative Assembly
(provincial representative):

Greg Kylo: www.GregKylo.com

Local Member of Parliament (federal representative):

Colin Mayes: www.ColinMayes.ca

REGIONAL HEALTH AUTHORITY:

Interior Health Authority: www.InteriorHealth.ca

INDUSTRY:

Industry activity within Sicamous is diverse and includes strong pockets of service and tourism related businesses, as well as manufacturing and trades activity.

Marine-based industries catering to both houseboat and other pleasure craft users is strong in lakeside and riverside areas over the summer months, and an evolving winter tourism market based around sledding (snowmobiling) is helping to draw in visitors to the area year-round.

TOP 5 INDUSTRIES IN SICAMOUS

1. Food Services

2. Retail

3. Accommodations

4. Trades

5. Construction

DISTANCE TO OTHER MAJOR CENTRES:

FROM SICAMOUS

Salmon Arm:	30.5 km	www.SalmonArm.ca
Revelstoke:	73 km	www.CityofRevelstoke.com
Vernon:	74.4 km	www.Vernon.ca
Kelowna:	128 km	www.Kelowna.ca
Kamloops:	139 km	www.City.Kamloops.bc.ca
Calgary:	481 km	www.Calgary.ca
Vancouver:	490 km	www.Vancouver.ca

NEARBY AIRPORTS:

Kamloops Regional		
Airport (YKA):	95.7 km	www.KamloopsAirport.com
Kelowna International		
Airport (YLW)	163 km	www.KelownaAirport.com

RAILWAY INFO:

Canadian Pacific Railway: www.CPR.ca

Canadian National Railway: www.CN.ca

CLOSEST DEEP WATER PORTS:

Port Metro Vancouver

City: Vancouver
Distance: 490 km
Type: Ocean
Website: www.PortMetroVancouver.com

Prince Rupert Port Authority

City: Prince Rupert
Distance: 1,377 km
Type: Ocean
Website: www.RupertPort.com

EDUCATION:

North Okanagan-Shuswap School District No. 83:
www.SD83.bc.ca

Okanagan College: www.Okanagan.bc.ca

SICAMOUS COMMUNITY AMMENITIES:

Sicamous offers a wide range of attractions and recreational opportunities based on proximity to both Shuswap and Mara lakes, and the surrounding wilderness terrain. A high proportion of tourism has supported the evolution of a diverse service industry with several restaurants, cafes and other related operations.

Sicamous is also ideally situated with short commute times to Salmon Arm, Revelstoke and the Okanagan Valley, allowing easy access to a larger breadth of recreation and cultural activities and amenities.

SICAMOUS ACTIVITIES HIGHLIGHTS

Number of parks and trail areas: 5+

Shuswap Tourism: www.ShuswapTourism.ca

Shuswap Trail Alliance: www.ShuswapTrails.com

Shuswap Wineries: www.ShuswapWineries.ca

Shuswap Groove: www.ShuswapGroove.com

SICAMOUS CONTACTS:

Sicamous District: www.Sicamous.ca

Sicamous and District Chamber of Commerce:
www.SicamousChamber.bc.ca

Sicamous and District Recreation Center:
www.SicamousRecCentre.ca

Sicamous Seniors: www.SicamousSeniors.ca

Sled Sicamous: www.SledSicamous.com

LABOUR FORCE BY OCCUPATION:

(2006) (% DISTRIBUTION):

Occupations	BC	Sicamous
Management	10.3%	14.9%
Business, finance & administration	16.9%	11.8%
Natural & applied sciences & related	6.2%	1.9%
Health	5.4%	4.6%
Social science, education, government service & religion	8.0%	1.9%
Art, culture, recreation & sport	3.4%	2.3%
Sales & service	25.0%	22.1%
Trades, transpor, equipment operator & related	15.2%	30.2%
Unique to primary industry	3.9%	2.3%
Unique to processing, manufacturing & utilities	4.1%	5.7%
Not applicable	1.5%	2.7%

REGIONAL RESOURCES:

Columbia Shuswap Regional District: www.CSRD.bc.ca

Shuswap Economic Development: www.ShuswapEcDev.ca

Shuswap Tourism: www.ShuswapTourism.ca

Shuswap Trail Alliance: www.ShuswapTrailAlliance.com

Okanagan Regional Library: www.ORL.bc.ca

Shuswap Community Foundation: www.ShuswapFoundation.ca

Community Futures-Shuswap: www.FutureShuswap.com

Shuswap Groove: www.ShuswapGroove.com



SHUSwap
Beautiful. Casual. Down-to-earth.

LOCAL FIRST NATIONS:

Shuswap Nation Tribal Council

www.ShuswapNation.org

Adams Lake Indian Band

Chief Robin Billy

Reserve land in SED Region: Salmon Arm & CSRD Area F

www.AdamsLakeBand.org

Little Shuswap Lake Indian Band

Chief Oliver Arnouse

Reserve land in SED Region: CSRD Area C & CSRD Area F

www.LSLIB.com

Neskonlith Indian Band

Chief Judy Wilson

Reserve land in SED Region: Salmon Arm

www.Neskonlith.org

Splatsin First Nation

Chief Wayne Christian

Reserve land in SED Region: CSRD Area D & CSRD Area E

www.Splatsin.ca